



## mini-edge

### 5 Channel All-in-One Switcher

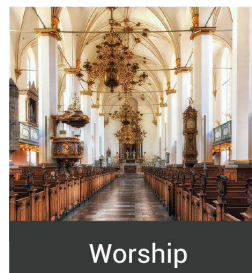
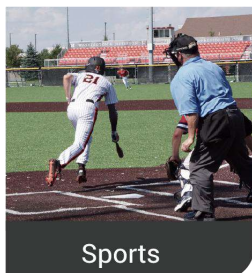
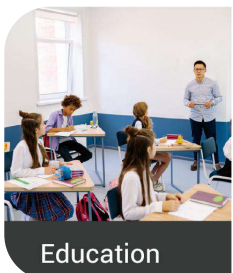
The mini-edge is RGBlink’s latest professional broadcast control console, significantly expanding the functionality of the mini series. It caters specifically to vertical scenarios such as rentals, self-media, and influencers. The mini-edge boasts a distinctive feature—eye-catching keyboard lighting effects, ensures comprehensive coverage of functions on each button, enabling professionals to quickly access required operations and achieve convenient blind operation through area segmentation.

In terms of hardware, the mini-edge features 5 video inputs, including 4 HDMI 2.0 ports. It offers 8 audio inputs with individual volume and sound effect adjustments via knobs. The professional-grade Neutrik connectors are highly favored by audio engineers for independent analog audio monitoring and amplification control. The standard features include recording, dual HDMI outputs, dual-platform streaming, RTMP(S) streaming via a single ethernet port, and UVC streaming. Its 5.5-inch full-color IPS screen supports full-screen preview and menu operations, significantly reducing the need for external display devices.

In addition to layer adjustment, aspect ratio adjustment, PTZ control, chroma keying, PIP (picture-in-picture), and preset recall functions, the mini-edge also introduces media library management and supports UVC input, making it compatible with UVC cameras and UAC audio recognition systems. The 115-degree vertical slot design allows users to easily mount an iPad, monitor, or smartphone for extended monitoring or streaming review capabilities.

In addition to the classic “SWITCH” five-way joystick and ZOOM toggle, the mini-edge introduces an external focusing adjustment component, enhancing PTZ control, reducing menu navigation time and truly addressing user needs.

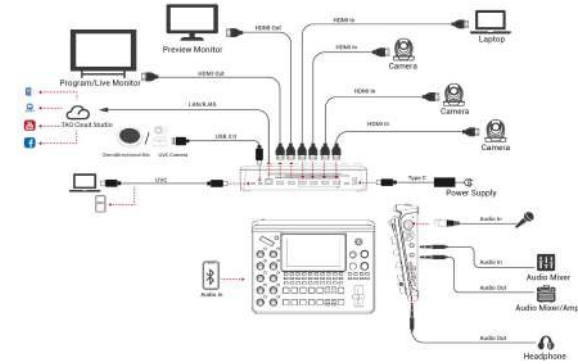
On the software control side, the mini-edge utilizes the latest WEBSEVER 2.0 control system platform, eliminating the need for software installation. With just a browser, users can easily perform signal monitoring or remote operation. Additionally, the mini-edge supports RGBlink TAO Cloud for integrated control, allowing simultaneous streaming to up to 32 platforms and more device linkage control, helping users achieve efficient content production and creation.



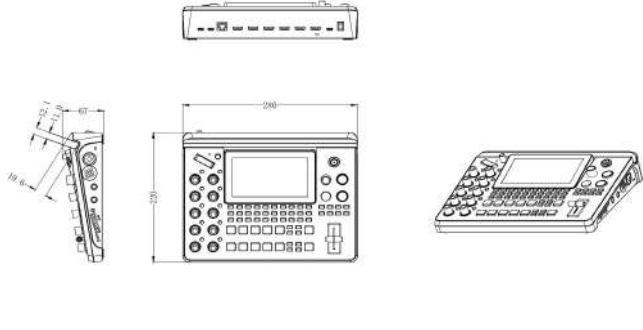
## Key Features

- Built-in 5.5 inch LCD screen
- Quad HDMI 2.0 inputs (HDCP compliance), resolutions up to 4K@60
- One USB (UVC) input supports camera source from RGBlink vue PTZ and webCAM
- Eight audio inputs with Four HDMI 2.0 embedded audio inputs and Four external audio inputs (one MIC, one LINE, one Bluetooth and one Type-C digital audio)
- Eight audio inputs allow for output of mixed audio across one or all available channels
- Dual HDMI 1.3 outputs for monitoring of multi-window PVW, PGM or AUX
- Dual audio out jacks for listening
- One-key recording. Recording capacity of hard drive is up to 2TB<sup>[1]</sup>
- Support simultaneous streaming to 4 live streaming platforms via RTMP(S)<sup>[2]</sup>
- Support multi-layer overlay, layer scaling and cropping
- 17 switching effect modes
- 5-direction joystick for controlling up to 4 PTZ cameras
- Support saving up to 10 scene presets and thumbnails for real-time full preview
- Web control and monitoring, compatible with mobile devices and computers, compatible with multiple operating systems
- Support Chroma Key
- 5G/4G Smartphone Tethering for iOS and Android system
- Air cooling design to ensure 24/7 stable operation

## Application



## Dimension



## Specification

<b>Connectors</b>	Input	HDMI 4K UVC (Webcam)	4xHDMI-A 1xUSB-C	
	Output	HDMI 2K USB (Record) USB (Stream)	2xHDMI-A 1xUSB-C 1xUSB-C	
	Audio	MIC IN LINE IN OUT	1x6.35mm XLR + TS Jack (48V Phantom Power) 1x6.35mm TRS Jack 1x6.35mm TRS Jack 1x3.5mm mini-Jack	
	Communication	LAN	1xRJ45	
	Power	Power Supply	1xUSB-C	
	<b>Performance</b>	Input Resolution	HDMI	1280×720@50/59.94/60   1024×768@60   1280×768@60   1280×800@60   1280×1024@60   1360×768@60   1366×768@60   1440×900@60   1600×1200@60   1680×1050@60   1920×1200@60   1920×1080i@50/59.94/60   1920×1080p@23.98/24/25/29.97/30/50/59.94/60   3840×2160p@30/50/60   4096×2160@30/50/60
Output Resolution		HDMI/USB (Webcam)	1280×720@50/60   1920×1080@24/25/30/50/60	
Video		Video Formats	HDMI 2.0   HDCP 2.2	
		Grayscale Processing	10bit	
		Video Sampling	4:4:4 YUV	
		Video Latency	<4 frames	
Audio		Line In Delay	up to 8 frames	
		Audio Format	HDMI	Linear PCM, 24 bits/48 kHz, 2 ch
Record/Storage		Record Formats	MP4	
		Disk Formats	FAT32(≤32 GB)   exFAT(64GB~2T)	
Supported Standards	HDMI	2.0		
	USB	3.0		
	H.265	ITU-T H.265/ ISO/IEC 23008-2		
<b>Power</b>	Compatibility	USB Power Delivery (PD) 3.0		
	Supported Cables	Certified USB PD Aware		
	Input Voltage	Type-C 12V/3A		
	Maximum Power	36W		
<b>Environment</b>	Temperature	0°C~45°C		
	Humidity	10%~85% RH		
<b>Physical</b>	Net Weight	1.48kg		
	Packaged Weight	2.80kg		
	Net Dimension	280.0mm × 220.0mm × 67.0mm		
	Packaged Dimension	332.0mm × 238.5mm × 109.0mm		

## Order Codes

Order Codes	Item
230-0006-01-0	mini-edge

## Contact us

Tel: +86-592-5771197  
 Fax: +86-592-5788216  
 E-mail: sales@rgblink.com  
 Headquarter: Room 601A, No. 37-3 Banshang community, Building 3,  
 Xinke Plaza, Torch Hi-Tech Industrial Development Zone, Xiamen, China



www.rgblink.com

[1] Recommended but not limited to 2TB.

[2] Simultaneously streaming on multiple platforms depends on the network.